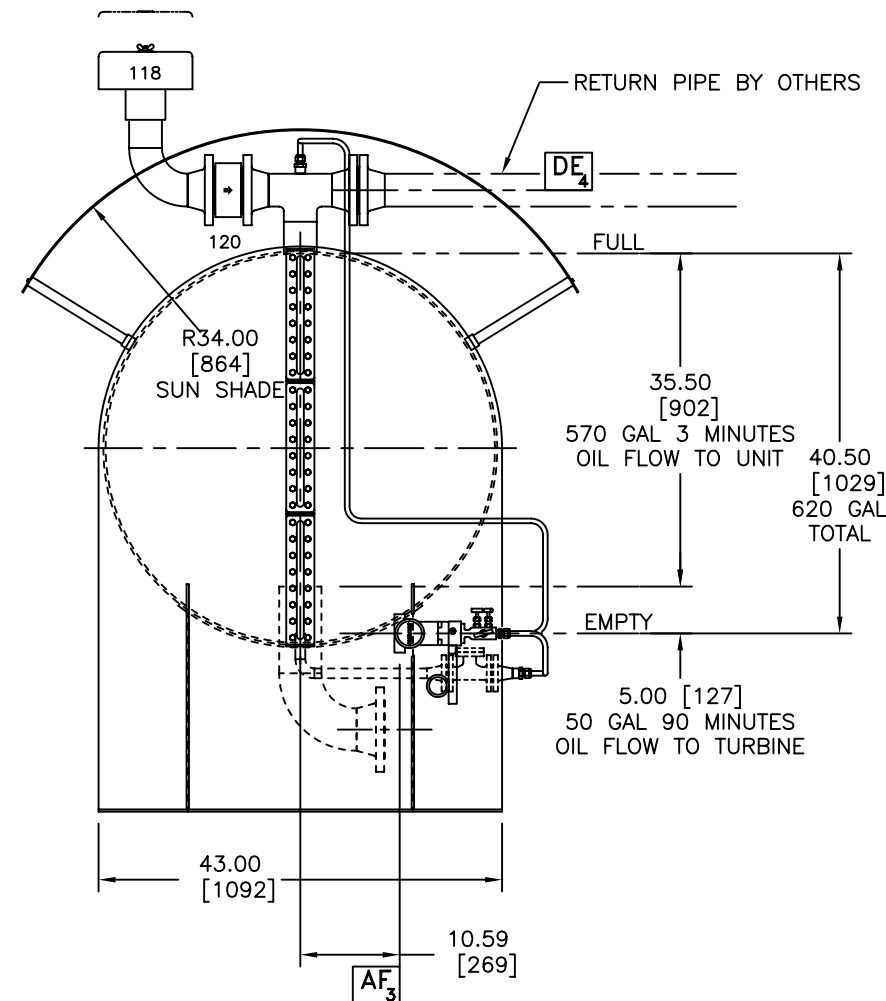


AutoCAD FILE cd614r00	REVISION 00				
DRAWN	CHECKED	APPROVED	C/T ENG.	SYS ENG.	

BLT-OF5-000-001
156-765-501
156-765-201

GENERAL ARRANGEMENT LUBE OIL RUNDOWN TANK		
<u>DRESSER RAND</u>		
TURBO PRODUCTS DIVISION OLEAN, NY USA		
DRAWING NO. BLT-0F5-000-001	SHT 1 OF 2	REV 0



DRAWING CERTIFIED CORRECT FOR APPROVAL:
 CUSTOMER: Rolls-Royce Energy Systems, Inc. / Technip / ADMA-OPCO
 SITE LOCATION: Zakum Field, Off-Shore Abu Dhabi, UAE
 CONTRACT No: C33029
 PURCHASE ORDER 9569B-202-PO-1010-01-0-001
 G.J. OLIVER SHOP ORDER No.: CD-614

AF3	RUNDOWN TANK LEVEL TRANSMITTER CONDUIT	0.50"	NPT	FEMALE
	LUBE OIL RUNDOWN TANK INSPECTION PORT	6.00"	RF FLG	150#
DL4	LUBE OIL RUNDOWN SUPPLY TO TURBINE	1.00"	RF FLG	150#
DG4	LUBE OIL RUNDOWN SUPPLY TO COMPRESSOR	4.00"	RF FLG	150#
DE4	RUNDOWN TANK RETURN TO RESERVOIR	3.00"	RF FLG	150#
IDENT.	DESCRIPTION	SIZE	TYPE	RATING

TURBO PRODUCTS DIVISION
OLEAN, NY USA

DRAWING NO. BLT-0F5-000-001	SHT 1 OF 2	REV 0
--------------------------------	---------------	----------

5

4

3

2

1

5

4

3

2

1

- NOTICE -
THIS DOCUMENT CONTAINS CONFIDENTIAL AND TRADE SECRET
INFORMATION AND IS THE PROPERTY OF DRESSER-RAND COMPANY,
AND IS PROVIDED TO THE RECEIVER IN CONFIDENCE.

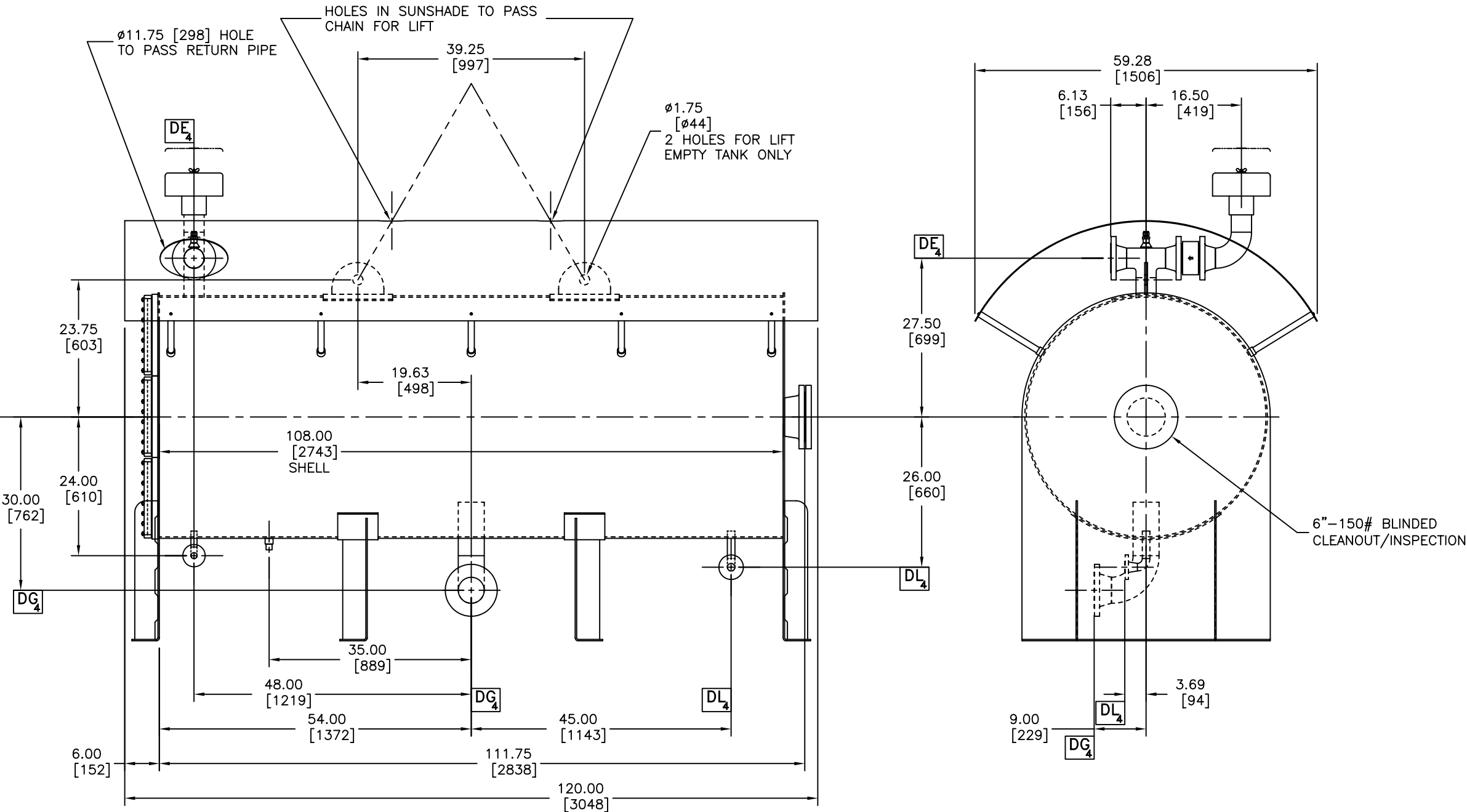
GENERAL INFORMATION NOTES

1. THIS IS A REFERENCE DRAWING, DO NOT USE FOR
CONSTRUCTION UNLESS CERTIFIED.
3. DO NOT SCALE DRAWINGS FOR DIMENSIONS.
4. MOUNTING BOLTS ARE FURNISHED BY CUSTOMER.
5. SUPPORTS FOR THE RUNDOWN TANK SHOULD BE
DESIGNED AND INSTALLED WITH SPECIAL
CONSIDERATION GIVEN TO THE WEIGHT AND
HEIGHT OF THE SYSTEM WHEN IN OPERATION.
6. FOUNDATION AND INTERCONNECTING PIPING DESIGNS
ARE THE RESPONSIBILITY OF THE CUSTOMER. THE
CONSOLE FOUNDATION, INSTALLATION AND PIPING
DRAWINGS MAY BE SUBMITTED TO G.J. OLIVER, INC.
FOR ENGINEERING COMMENTS. THESE COMMENTS
DO NOT REPRESENT AN APPROVAL OF THE DESIGN,
OR THE INSTALLATION.
7. PIPE FLANGE BOLT HOLES STRADDLE CENTERLINES
UNLESS OTHERWISE SPECIFIED.
8. APPROXIMATE LOCATIONS ARE SHOWN FOR AUXILIARY
CONNECTIONS ALLOW FOR VARIATIONS UP TO 0.50"
ON THESE DIMENSIONS.
9. TANK WILL BE FLUSHED CLEAN PRIOR TO SHIPMENT.
10. MATERIAL: 316L STAINLESS STEEL

RUNDOWN TANK CAPACITY: 625 GALLONS

RUNDOWN TANK WEIGHTS:
DRY WEIGHT: 2,130 LBS
OPERATING: 4,690 LBS

204.00
[5182 MM]
ABOVE COMPRESSOR
CENTERLINE



AUTOCAD FILE c0614tr00	REVISION		00	
	DRAWN	CHECKED	APPROVED	C/T ENG

CONTRACT NO.		CT33029	BY	DATE
TYPE	CAD	DRAWN	Layman	02May08
SCALE	NONE	CHECKED	D.Layman	02May08
DEPT.	56.30	REDRAWN		
DRAFTING APPROVAL		CAParker		02May08
CONTRACT APPROVAL				
SYSTEM APPROVAL				
		LICENSEE		

GENERAL ARRANGEMENT LUBE OIL RUNDOWN TANK		
DRESSER RAND		
TURBO PRODUCTS DIVISION OLEAN, NY USA		
DRAWING NO.	SHT	REV
BLT-0F5-000-001	2 OF 2	0