



PROJECT TITLE:	PETRO-CANADA HORIZON PROJECT
----------------	---------------------------------

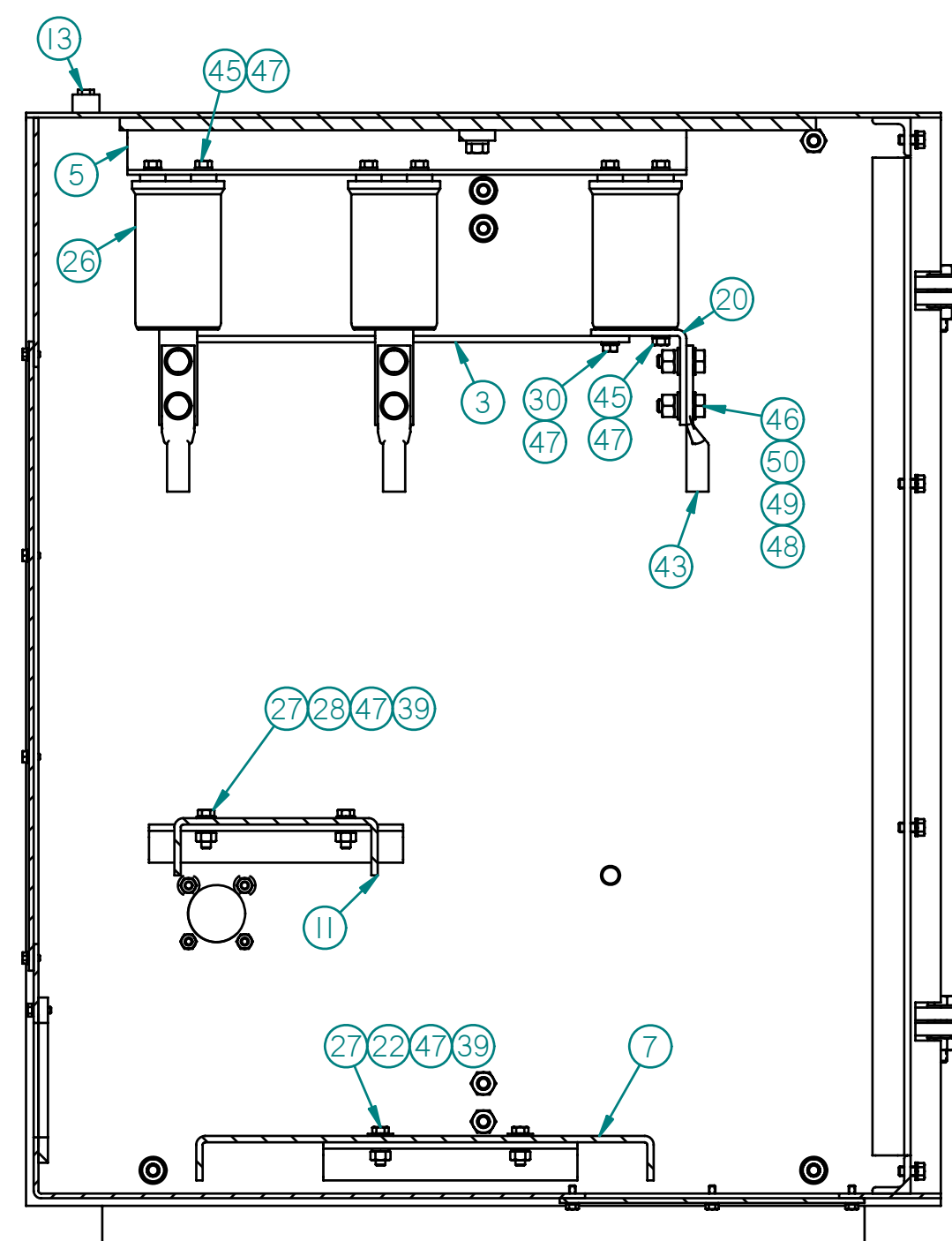
VENDORS NAME:	Dresser-Rand
---------------	--------------

DOCUMENT TITLE:	Motor Terminal Box
-----------------	--------------------

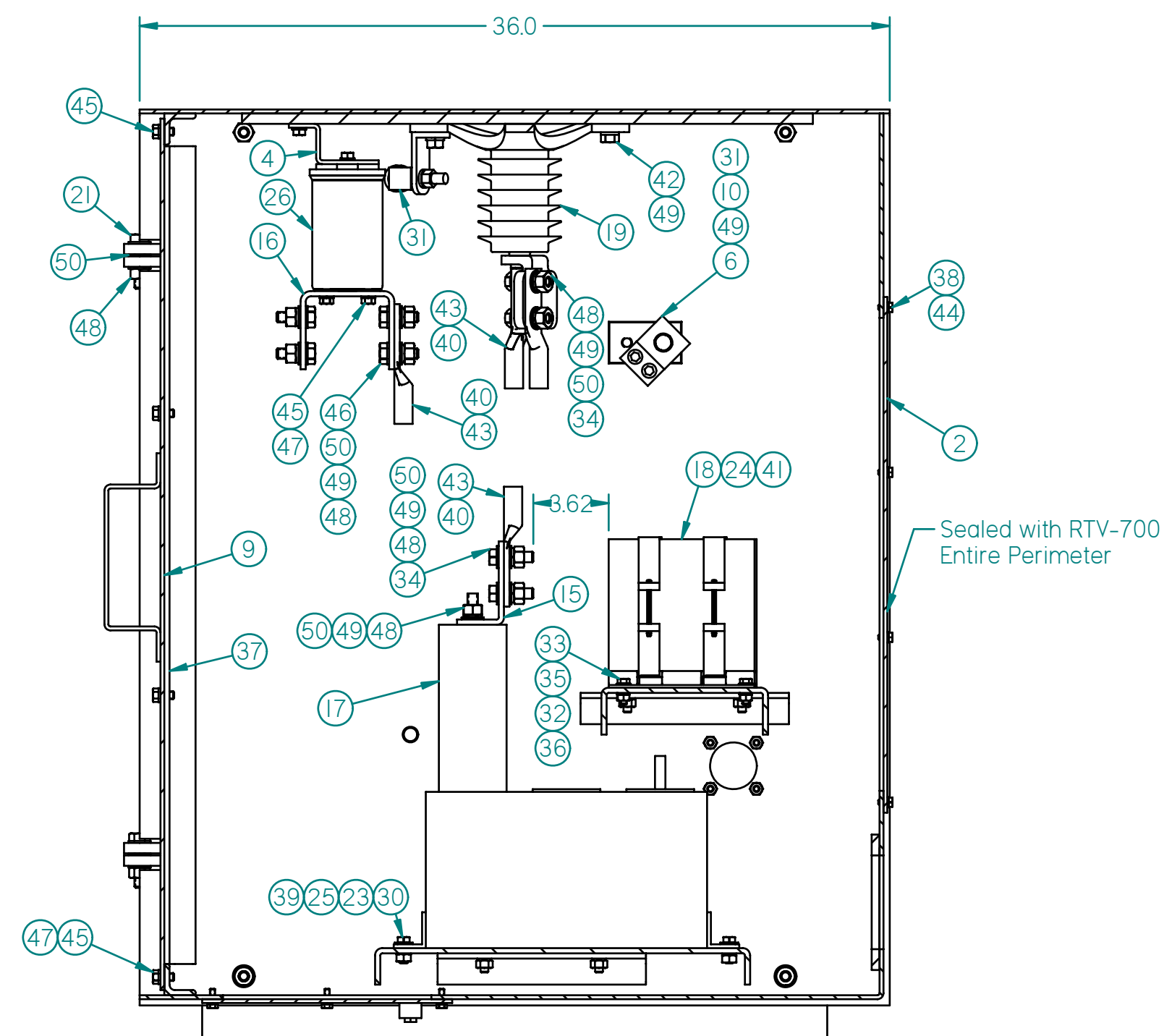
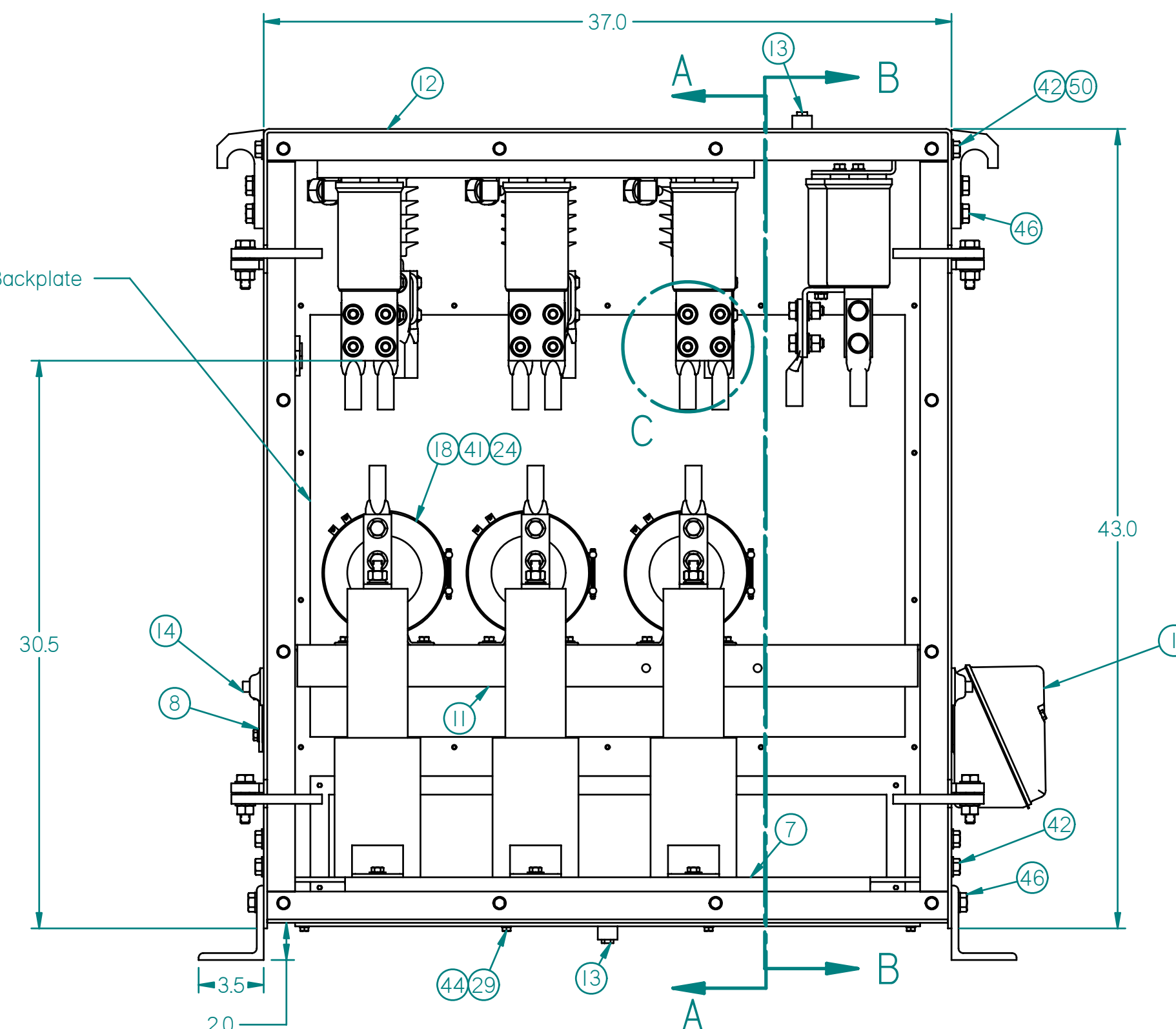
VENDORS DOCUMENT NO:	BOM-0FX-100-005
VENDORS REVISION NO:	0
DATE SUBMITTED	6/9/2009

PETRO-CANADA Supplier Document Review	
Permission to proceed does not constitute acceptance or approval of Design Detail, Calculations, Analysis, Test Methods or Materials developed OR selected by SUPPLIER, and does NOT relieve SUPPLIER from FULL compliance with Contractual Obligations	
<input type="checkbox"/> 1 Work May Proceed	
<input type="checkbox"/> 2 Revise & Resubmit. Work may Proceed subject to incorporation of changes	
<input type="checkbox"/> 3 Revise & Resubmit. Work may not Proceed	
<input type="checkbox"/> 4 Review not required. Work may proceed	
By: _____	Date: _____
Discipline: _____	
Equipment No. JMH-71011	
MR No. 7 1 0 M R J 0 0 0 1	
1017	V P — B 0 2 — 7 1 0 — J — 0 1 A C — 0 0 1 4 0 0

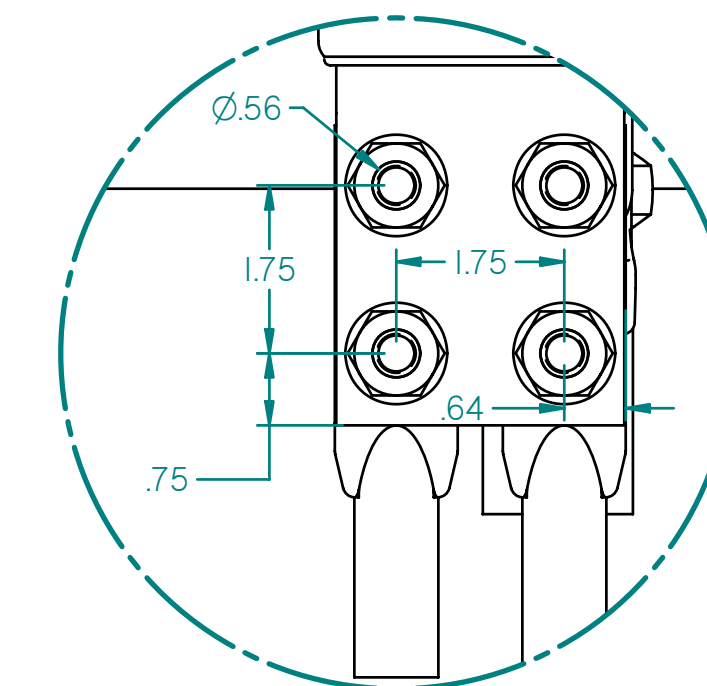
Item Number	Title	Quantity
1	Box Asm, Acc	1
2	Plate	1
3	BAR	1
4	BAR	1
5	Bar	1
6	Lug	1
7	Channel	1
8	Cover Asm.	1
9	Decal	1
10	Screw, Hex Hd	1
11	Channel	1
12	Box, Term	1
13	Breather/Drain	2
14	PLUG,PIPE	2
15	Bar, Bus	3
16	Bar, Bus	3
17	Capacitor	3
18	Transformer, Current	3
19	Arrester	3
20	Connector	3
21	Screw, Hex Hd	4
22	WASHER	4
23	WASHER	6
24	Terminal	6
25	Washer, Lock	6
26	Insulator	6
27	Screw, Hex Hd.	8
28	Washer	8
29	Screw, Hex Hd.	9
30	Screw, Hex Hd.	9
31	Wire	10
32	Washer, Lock	12
33	SCREW, HEX HD	12
34	Screw, Hex Hd	12
35	Washer	12
36	Nut, Hex	12
37	Neoprene	13
38	SCREW,HEX HD	13
39	Nut, Hex	14
40	Cable	15
41	Cable	16
42	Screw, Hex Hd	17
43	Terminal	18
44	Washer, Lock	22
45	Screw, Hex Hd	36
46	Screw, Hex Hd	38
47	Washer, Lock	47
48	Nut, Hex HD	67
49	Washer, Lock	73
50	Washer	125



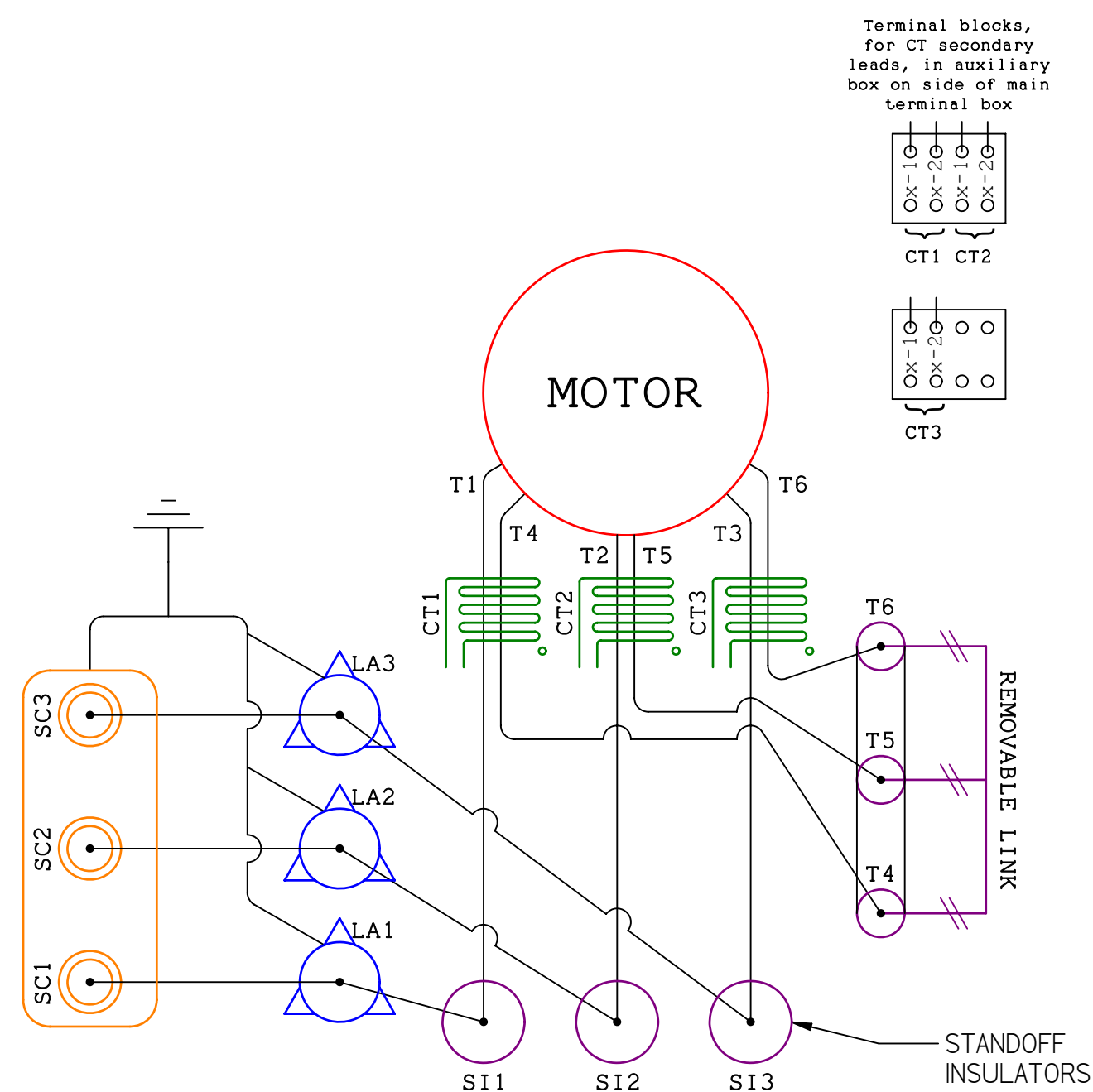
SECTION B-B



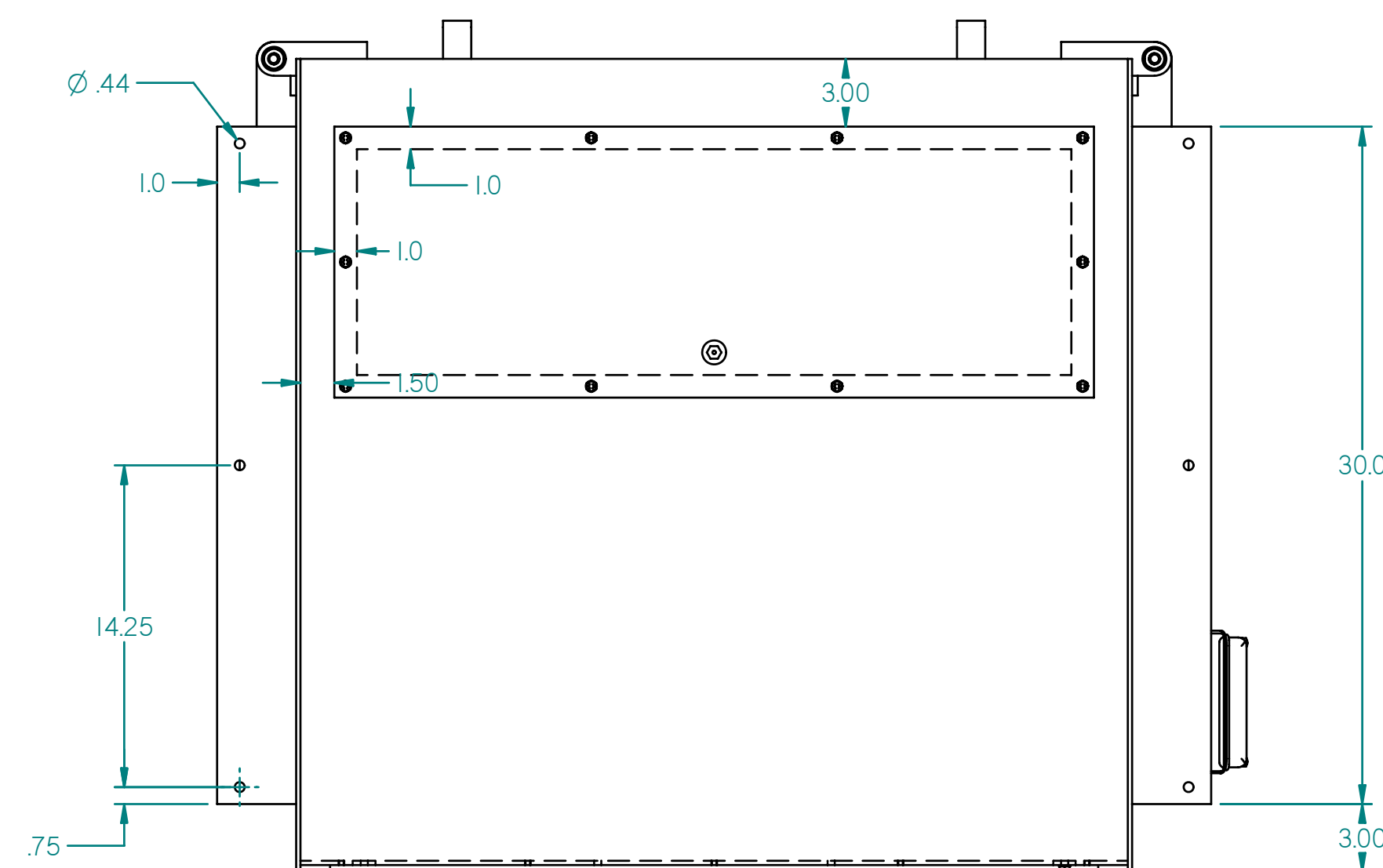
SECTION A-A



DETAIL C



MOTOR CONNECTION DIAGRAM



NOTES:

1. CUSTOMER TO CONNECT TO STANDOFF INSULATORS (SI)
2. CUSTOMER TO SUPPLY 3 LUGS PER PHASE (FRONT TO BACK) ON BUS BAR CONNECTED TO STANDOFF INSULATOR (SI) FOR INCOMING POWER

3001396759-10		BOM-0FX-100-005	
CONFIDENTIAL PROPERTY OF <h1 style="margin: 0;">SIEMENS</h1> POWER CONVERSION DIVISION NORWOOD PLANT		NAME <h1 style="margin: 0;">Box, Terminal</h1>	
UNLESS OTHERWISE SPECIFIED:		Solid Edge	
1-PLACE DEC ±.06 2-PLACE DEC ±.03 3-PLACE DEC ±.01 4-PLACE DEC ±	ANGULAR ±	 MACHINED SURFACE TEXTURE	
FOR TOLERANCES NOT SPECIFIED SEE 500-SERIES SHOP PRACTICE STANDARDS		APPROX. WT. 1047 lbm	
SIMILAR TO 59-970-220-801		THIRD ANGLE PROJECTION	
DR <u>JMS</u>	SCALE 1:15		SHEET 1-F
AP <u>ESO</u>	59-970-220-802		ISSUE 00

59-970-220-802