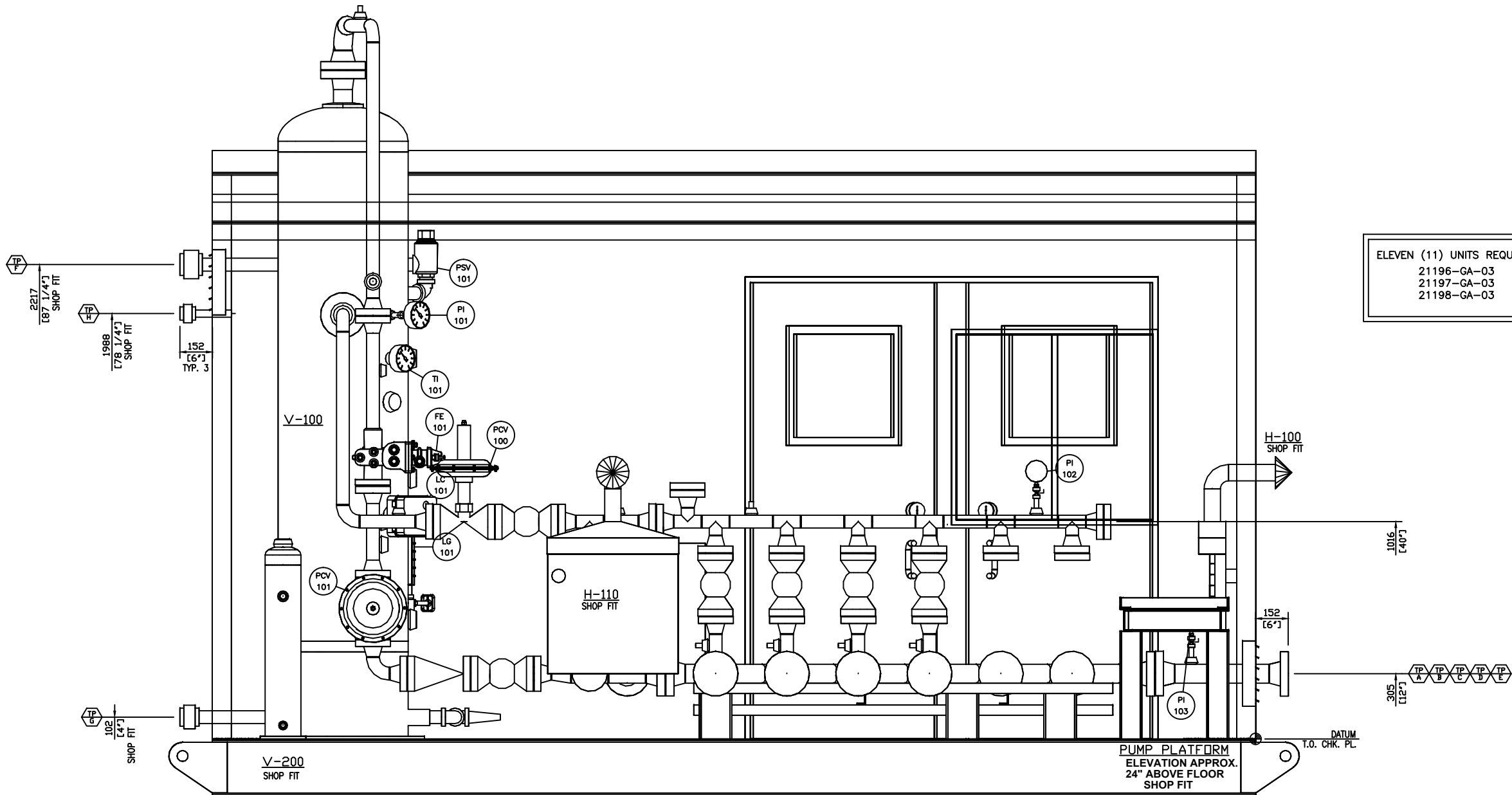



The information contained in this drawing is the confidential property of Platinum Energy Services Corp. No part thereof shall be reproduced or communicated to a third party without written authorization from Platinum Energy Services Corp.

TIE-IN SCHEDULE			
MARK	SIZE / RATING	ELEVATION	DESCRIPTION
TP-A	3" 600#	12" [305]	HEADER INLET
TP-B	3" 600#	12" [305]	HEADER INLET
TP-C	3" 600#	12" [305]	HEADER INLET
TP-D	3" 600#	12" [305]	HEADER INLET
TP-E	3" 600#	12" [305]	GROUP OUTLET
TP-F	2" NPT	87 1/4" [2217]	PSV-101 OUTLET
TP-G	2" NPT	4" [102]	DRAIN OUTLET
TP-H	1" NPT	78 1/4" [1988]	PSV-200 OUTLET

NOTE: ALL ELEVATION DIMENSIONS FROM TOP OF CHECKER PLATE.



VIEW 'A-A'

NOTES:									ENGINEER'S STAMP	DRAWN BY	LL	13-05-28	CLIENT PROGRESS ENERGY CANADA LTD.		
										CHK'D BY	BX	13-05-28			
										APP'D BY	RWS	13-05-28			
										CAD REF	21196-GA-03.DWG	SCALE AS SHOWN			
										<div> CALGARY, ALBERTA</div>			TITLE 24"x7'-6" 1440 PSI 3PH DRESS 2PH TEST SEPARATOR c/w PROVISIONS FOR 6 WELL HEADER -GA- VIEW 'A-A'		
										JOB NO.	21196-21198	DRAWING NO.	21196-GA-03	REV	3